

 **Midnight Black**[®]
CARBON BLACK

**D&C Black 2 pigments and dispersions
for cosmetics**

D&C Black 2 pigments and dispersions

Midnight Black® is a range of D&C Black 2 pigments and dispersions for the cosmetic industry.

It is an exclusive, high purity carbon black pigment prepared by an oil furnace process. This carbon black pigment allows formulators to create a deep blue-black shade which is second to none. Mascara's, eyeliners and nail polish are the most common applications for this intense black pigment.

Besides in powder form, we offer 'ready to use' Midnight Black® dispersions to help customers enhancing the full colour tone of the pigment. The dust free dispersions are convenient to handle in production. We also produce carbon black based custom made dispersions for our customers.

Midnightblack® is FDA certified and complies to the EU, US and Japanese regulations for cosmetics.

Product benefits

- Provides a deep, blue black shade
 - Inert pigment
 - Ready to use dispersions
 - In compliance with cosmetic regulations
-

Applications

We recommend to use this productline for the following applications.



Lip area



Eye area



External



Art. nr.	Product name
1909000	Midnight Black
1909090	Midnight Black MBD 241
1909060	Midnight Black MBD 203

Midnight Black MBD 241

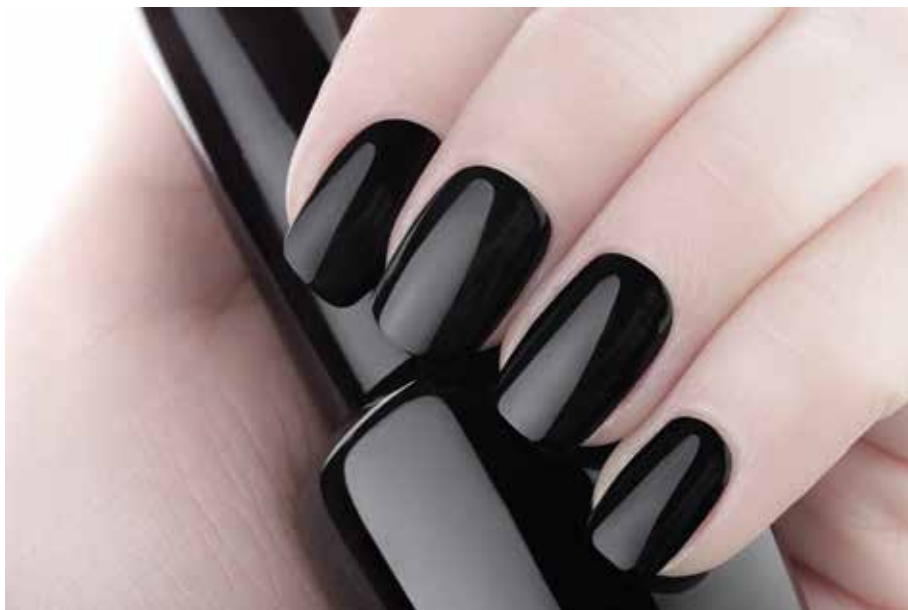
A general purpose dispersion with a 20% Midnight Black loading, 42% water and 25% Glycerin. This dispersion is commonly used in mascara's, eyeliners and other water based products.

Midnight Black MBD 203

This dispersion has been developed for waterproof mascara formulations. The dispersion contains 20% Midnight Black and 70% Isododecane.

Custom made dispersions

Custom made dispersions are available upon request.



General formulation do's and don'ts

Well dispersed carbon black

In order to get the full colour tone out of carbon black it is of paramount importance that a good dispersion is made. The properties of carbon black require some special attention. A turbo mill or 3 roll mill is needed to disperse the carbon black powder.

UV stability

Midnight Black is not sensitive to UV light.

Solvent resistance

Midnight Black is solvent resistant.

Temperature resistance

Midnight Black is high temperature resistant.

Powder dust

Midnight Black has a small particle size and is a dusty powder. Please take this into consideration for production. Ready to use dispersions are available.

Finished product	Level of use (recommendation)
Eye liner	Up to 10 %
Eye shadow	Up to 10 %
Brush-on-brow	Up to 10 %
Mascara	1 - 5 %
Lipstick	0,1 - 10 %
Blusher	0,1 - 10 %
Nail polish	1 - 5 %



Formulation guideline | Mascara

Product: Mascara
 Code: GL-211102
 Special effect pigment: Midnight Black MBD 241 Water | Geopearl C Crystal Glittering Sun Gold

Product name	INCI name	% WT.	Supplier
Phase A			
Water	Water	56.25	
Ketrol T	Xanthan Gum	0.15	CP Kelco
Veegum HV	Magnesium Aluminium Silicate	0.55	vanderbilt Minerrals LLC
Midnight Black MBD 241 Water	Aqua CI 77266 (nano) Glycerin PVP EDTA Sodium Cetearyl Sulfate Phenoxyethanol Ethylhexylglycerin Caprylyl Glycol	5.00	Geotech International B.V.
Phase B			
Disodium EDTA	Disodium EDTA	0.05	
Methyl Paraben	Methyl Paraben	0.30	
Triethanolamine	Triethanolamine	0.50	
1,2-Propanediol	1,2-Propanediol	2.00	
Phase C			
Geopearl C Crystal Glittering Sun Gold	Synthetic Fluorophlogopite Titanium Dioxide CI 77491	3.00	Geotech International B.V.
Phase D			
DC 245 Fluid	Cyclopentasiloxane	5.00	Dow Corning
Dowsil 5225C Formulation Aid	Cyclopentasiloxane PEG/PPG-18/18 Dimethicone	1.00	Dow Corning
Beeswax	Beeswax	10.00	Koster Keunen B.V.
Stearic Acid	Stearic Acid	2.00	
Glyceryl Stearate	Glyceryl Stearate	2.00	
Phase E			
Stearyl Alcohol	Stearyl Alcohol	2.00	
Polyisobutene	Polyisobutene	1.00	
Preservatie	Preservative	1.20	
PVP K-30	PVP/Polyvinylpyrrolidone	4.00	
Carnauba Wax	Carnauba Wax	4.00	Koster Keunen B.V.

Procedure

1. Mix Phase A;
2. Mix Phase B and add to Phase A;
3. Add Phase C to Phase A+B and heat up until 75°C;
4. Add Phase D to Phase A+B+C, keep temperature at 75°C;
5. Add Phase E to Phase A+B+C+D and mix until uniform;
6. Cool to 40°C and pour into container.



Formulation guideline | Liquid Eyeliner

Product: Liquid Eyeliner
 Code: GL-211101
 Special effect pigment: Midnight Black MBD 241 Water | Geoparl C Crystal Silk Beige | Geoflake Crystal Silver XL

Product name	INCI name	% WT.	Supplier
Phase A			
Water	Water	65.20	Vanderbilt Minerrals, LLC
Veegum K Granules	Magnesium ALLuminium Silicate	1.00	
Phase B			
Triethanolamine	Triethanolamine	1.40	
Propylene Glycol	Propylene Glycol	8.00	
Phase C			
Keltrol Xanthan Gum	Xanthan Gum	0.30	CP Kelco
Phase D			
Midnight Black MBD 241 Water	Aqua CI 77266 (nano) Glycerin PVP EDTA Sodium Cetearyl Sulfate Phenoxyethanol Ethylhexylglycerin Caprylyl Glycol	2.00	Geotech International B.V.
Geoparl C Crystal Silk Beige	Synthetic Fluorophlogopite Titanium Dioxide CI 77491	8.00	Geotech International B.V.
Geoflake Crystal Silver XL	Synthetic Fluorophlogopite Titanium Dioxide Tin Oxide	10.00	Geotech International B.V.
Phase D			
Stearic Acid	Stearic Acid	2.80	
Glyceryl stearate	Glyceryl stearate	0.80	
Oleyl Alcohol	Oleyl Alcohol	0.50	

Procedure

1. Disperse the Magnesium Aluminium Silicate into water using high-shear mixing until smooth;
2. Add phase B to phase A and mix until uniform;
3. Add phase C to phase A+B and mix until uniform;
4. Add phase D to phase A+B+C and mix until uniform;
5. Heat phase ABCD to 75°C ± 5°C;
6. Premix phase E to 75°C ± 5°C;
7. Add phase E to phase |ABCD and mix until uniform;
8. Cool to 35°C ± 5°C;
9. Pour into eyeliner container.



Art. nr.	Product name	Application Area			Ingredients												
		Lip area	Eye area	External (nail)	D&C Black 2 (CI 77266 (nano))	Isododecane	Polyglycerol-3 Polycrinoleate	Propylene Carbonate	Caprylyl Glycol	Ethylhexylglycerin	Phenoxyethanol	Sodium Cetearyl Sulfate	EDTA	PVP	Glycerin	Aqua	
1909000	Midnight Black	●	●	●	X												
1909090	Midnight Black MBD 203		●		X	X	X	X									
1909060	Midnight Black MBD 241		●		X				X	X	X	X	X	X	X	X	X

- Global approval
- European and United States approval
- ⊙ European and Japanese approval



Available packaging

Product	Nett weight	Gross weight	Package size L x W x H
Midnight Black	2 x 5 kg	11 kg	35 x 18 x 21 cm
Midnight Black	150 kg	160 kg	40 x 40 x 50 cm
Midnight Black MBD 241	15 kg	17 kg	37 x 37 x 45 cm
Midnight Black MBD 203	20 kg	22 kg	37 x 37 x 45 cm

Packaged in an aluminium bag in a cardboard box.

Shelf life

Midnight Black: 10 years original packaging in a closed box under dry conditions.

Midnight Black MBD241: 1 year original packaging unopened can under dry conditions.

Midnight Black MBD203: 5 years original packaging unopened can under dry conditions.

Samples

Approx. 100 grams samples are available free of charge.

Product data

Product data sheets and additional technical product information are available online. To get access please send an email to marketing@geotech.nl and ask for an account.



About us

Geotech International B.V., based in Haarlem, The Netherlands, is a dynamic company focusing on the development, production and distribution of special effect pigments. The owners family has a background in the industry with over 40 years of experience. Since 1999 the company is managed by the third generation.

GEOTECH's special effect pigments are being used globally in the cosmetics, plastics, coatings & paints, printing and arts & crafts industry.

Disclaimer

All information and samples provided by GEOTECH are given in good faith and without warranty. Our advice does not release you from the obligation to verify the information provided and to test our products as to their suitability for the intended processes and uses. The application, use and processing of our products and the products manufactured by you on the basis of our technical advice are beyond our control and therefore entirely your own responsibility.



Geotech International B.V.
P.O. Box 1578
2003 BP Haarlem
The Netherlands

T: +31(0)235317553
E: info@geotech.nl
URL: geotech.nl



REV0 26.03.2021

© 2021 GEOTECH. All rights reserved.

